

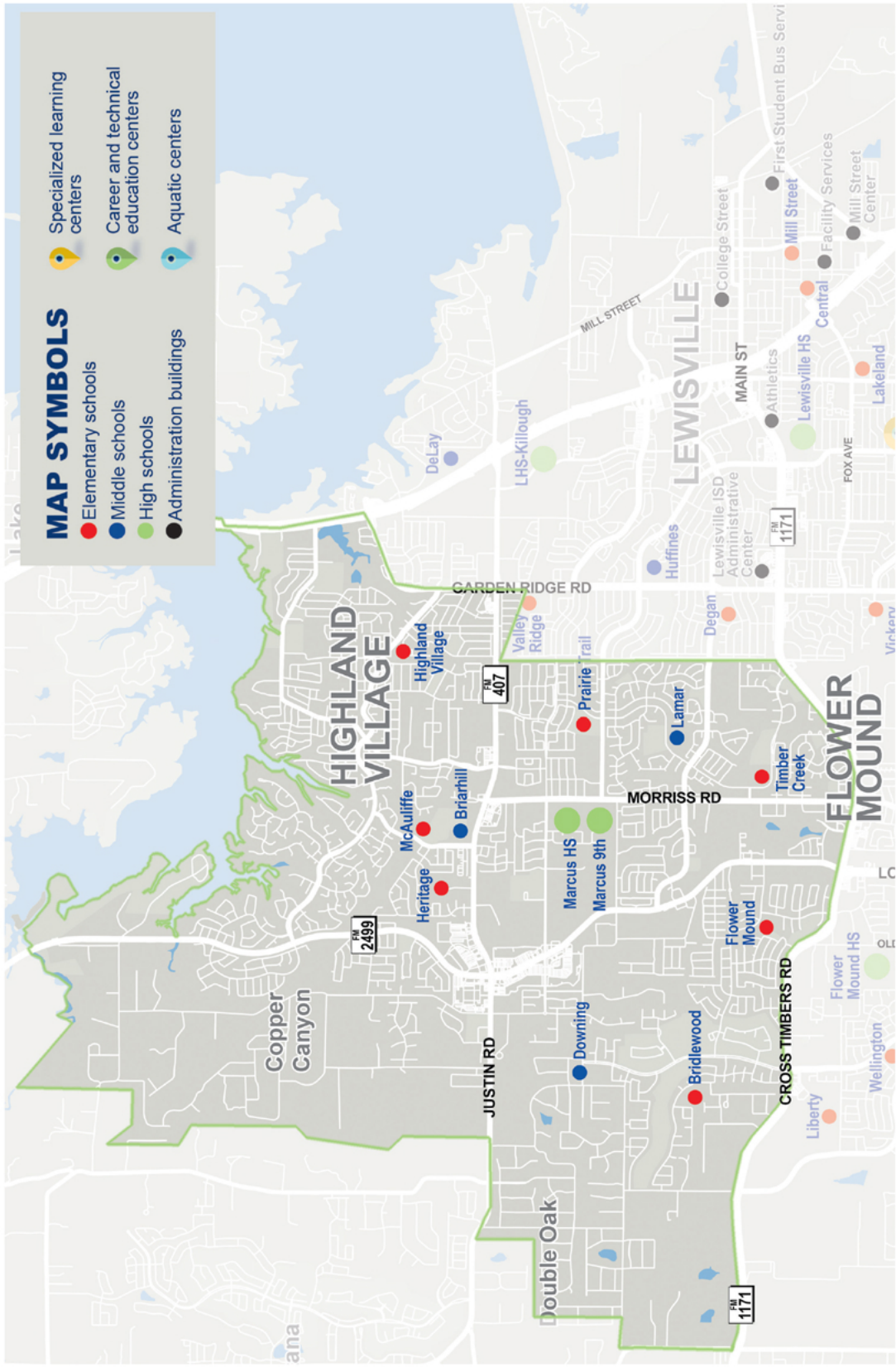
MARCUS HIGH SCHOOL



HOME OF THE MARAUDERS

MAP SYMBOLS

- Elementary schools
- Middle schools
- High schools
- Administration buildings
- Specialized learning centers
- Career and technical education centers
- Aquatic centers



Marcus High School

Campus Profile

SCHOOL HOURS ONLINE

8:20 a.m. to 3:35 p.m. **GRADES** 10th through 12th
lisd.net/mhs | facebook.com/marcusmarauders | twitter.com/marcus_hs

STUDENT INFORMATION

2305 Students
96.6% Average daily attendance

STAFF INFORMATION

183.6 Total staff members
14.2 Average number of years teaching experience
9.7 Average number of years teaching in LISD schools

PROFESSIONAL LEARNING

Total number of hours the staff spent developing their job skills last year

13,170

66.5

Average professional learning hours per Lewisville ISD staff member



OBSERVATION

1393

Number of administrator visits to observe class instruction

199 Average number of classroom visits per administrator

What we believe

We embrace the motto of "Pride in Excellence," as exhibited by the following "Trust and Believe" statements:

- Every student is uniquely capable and deserves to be challenged each day
- Uninhibited learning depends on a safe, nurturing, inclusive and flexible environment
- An educated citizenry is essential for equal opportunity and a prosperous society
- Meaningful and relevant work engages students in profound learning
- Critical-thinking and problem-solving today are necessary for students to be equipped for future challenges
- Genuine transformation requires disruptive innovation
- Education is the shared responsibility of the community

COLLEGE READINESS

Average combined scores for 2020 college entrance exams

1182 | **24.8**
 SAT | ACT

Enrolled in AP, Pre-AP or dual credit courses **62%**

GRADUATION RATE

Percent of graduates from the class of 2020

99%



Percent of students whose test scores indicate they are college and career ready.



SAT Reading/Writing
90%



SAT Math
74%



ACT English Comp
87%



ACT Algebra
71%



ACT Social Science
70%



ACT Biology
63%



PSAT/NMSQT Reading/Writing
86.1%



PSAT/NMSQT Math
68%

CLUBS

Clubs provide opportunities for students to engage in learning of their choice beyond the classroom.

Some of ours include National Honor Society, Mu Alpha Theta, Tr-M Music Honor Society, Spanish National Honor Society, National English Honor Society, National French Honor Society, Science National Honor Society, American Sign Language Honor Society, German National Honor Society, Latin Honor Society, Black History Club, Circle of Friends Club, Fellowship of Christian Athletes, Junior Classical League, Interact Club, Student Council, Robotics Club, Medical Education Development Society, Junior World Affairs Club, Red Nation Crew, International Thespian Society, Ultimate Frisbee Club, and UNICEF.

ARTS AND ATHLETICS



49%

Participation in athletics or physical education

46%

Participation in fine arts such as band or theater

PROGRAMS

Our programs include AP, Honors, and Dual Credit Programs, Marcus Robotics Institute, DECA, MHS Real Estate Program, AVID, UIL Academics, Academic Decathlon Team, PTSA Team, Air Force JROTC, Journalism, UIL Performing Arts and Athletic Programs, Marquettes, Cheer, Texas Association of Future Educators, MHS Counseling Parent Education Programs, and Fashion Design.

AWARDS AND RECOGNITIONS

- 2021 CREST Counseling Award
- 2021 UIL Academics District Champions
- 2021 Academic Decathlon Team State Qualifier
- DECA - 34 State Qualifiers
- 2020 Area C Marcus Band Champions
- 2020-2021 Multiple Choir, Orchestra & Band Sweepstakes Awards
- TMEA - Percussion Ensemble, 2021
- 2020 Football District 6-6A Champions
- 2021 Track Region Champions
- 2021 Boys Soccer District Champions
- 2021 Girls Soccer Area Champions
- 2021 Boys Basketball C-District Champions
- 2021 Boys and Girls Water Polo State Qualifiers

What do our parents think?

In April 2021, parents were surveyed about the campus their child attends. Values represent the percentage of respondents who agree. Based on 451 responses.

Are satisfied overall	90.9%
The school staff cares	89.4%
Students know how to get help	85.6%
I know about my child's grades	86.7%
School is safe	94.2%
Students are happy	84.7%
Staff is encouraging	89.4%
Students who fall behind can get help	84.7%
School work is important	78.9%
Students feel welcomed	86.5%
School communicates effectively	89.1%
The staff is approachable	88.7%
They value culture and individual needs	86.7%

What do our students think?

In April 2021, seniors were asked about their experiences in the district, future readiness and post-graduation plans.



Attend college	91.1%
Join the military or attend a service academy	3.2%
Work full time	13.0%
Attend technical or trade school	3.2%
Attain industry certification	2.5%
Other	3.2%
Well-prepared for the future	88.6%
Satisfied with their LISD education	87.9%

EDWARD S. MARCUS HIGH SCHOOL

Home of the Marauders, Flower Mound, Texas

Will Skelton, Principal



Marcus High School 9th Grade Campus Profile

SCHOOL HOURS ONLINE

8:20 a.m. to 3:35 p.m. **GRADES** 9th grade
lisd.net/mhs9 | facebook.com/Marcus9th | twitter.com/MHS9th

STUDENT INFORMATION

756 Students
96.6% Average daily attendance

STAFF INFORMATION

60 Total staff members
11.6 Average number of years teaching experience
7.9 Average number of years teaching in LISD schools

PROFESSIONAL LEARNING

Total number of hours the staff spent developing their job skills last year

4,029

74.6

Average professional learning hours per Lewisville ISD staff member



OBSERVATION

313 Number of administrator visits to observe class instruction

104 Average number of classroom visits per administrator

What we believe

Marcus 9th Grade Campus serves the unique needs of 9th graders in a learning environment designed to foster collaboration, innovation and multiple learning styles. We believe learning is maximized through innovation and 21st-Century teaching practices and that student and staff diversity fuels creativity, global thinking, and a positive school environment. Courses target college and career readiness and real-world challenges through problem and project-based learning. Students practice social responsibility through regular service opportunities throughout the year and excel in balancing extra and co-curricular activities. Our campus supports academic, social and emotional intelligence through a variety of high-quality programs and experiences. M9 students are preparing to be tomorrow's leaders!

COLLEGE READINESS

Average combined scores for 2020 college entrance exams

1182 | **24.8**
 SAT | ACT

Enrolled in AP, Pre-AP or dual credit courses **71%**

GRADUATION RATE

Percent of graduates from the class of 2020

99%



Percent of students whose test scores indicate they are college and career ready.



SAT Reading/Writing
90%



SAT Math
74%



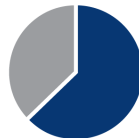
ACT English Comp
87%



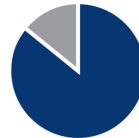
ACT Algebra
71%



ACT Social Science
70%



ACT Biology
63%



PSAT/NMSQT Reading/Writing
86.1%



PSAT/NMSQT Math
68%

CLUBS

Clubs provide opportunities for students to engage in learning of their choice beyond the classroom.

Some of our clubs include Student Council, Kindness Ambassadors, UNICEF, Young and Purposed, DECA, MEDS Club, and Circle of Friends



What do our parents think?

In April 2021, parents were surveyed about the campus their child attends. Values represent the percentage of respondents who agree. Based on 133 responses.

Are satisfied overall	94.7%
The school staff cares	94.7%
Students know how to get help	89.5%
I know about my child's grades	91.7%
School is safe	97.0%
Students are happy	91.7%
Staff is encouraging	93.2%
Students who fall behind can get help	90.2%
School work is important	88.0%
Students feel welcomed	88.7%
School communicates effectively	91.7%
The staff is approachable	92.5%
They value culture and individual needs	88.7%

ARTS AND ATHLETICS



89%
Participation in athletics or physical education

65%
Participation in fine arts such as band or theater

PROGRAMS

Our campus offers unique programs to help our students become better learners, leaders, and friends.

Some of ours include Air Force, JROTC, Marauder Time, AVID, Academic UIL, Humanities and Marcus Parent Education Programs

AWARDS AND RECOGNITIONS

- LEF Teacher Grants in Biology and English
- LISD Secondary Teacher of the Year Finalist Kailey McMillan
- LISD Campus Support Employee Finalist Eva Dinkmeyer
- CREST Counseling Award 2020
- DECA State and National Competitions
- Journalism State and National Competitions
- AP College Board Success

What do our students think?

In April 2021, seniors were asked about their experiences in the district, future readiness and post-graduation plans.



Attend college	91.1%
Join the military or attend a service academy	3.2%
Work full time	13.0%
Attend technical or trade school	3.2%
Attain industry certification	2.5%
Other	3.2%
Well-prepared for the future	88.6%
Satisfied with their LISD education	87.9%

MARCUS HIGH SCHOOL 9TH GRADE CAMPUS

Home of the Marauders, Flower Mound, Texas

Chantell Upshaw, Principal



Briarhill Middle School

Campus Profile

SCHOOL HOURS ONLINE

8:55 a.m. to 4:10 p.m. **GRADES** 6th through 8th grade
lisd.net/briarhill | facebook.com/briarhillms | twitter.com/BMSBulldogs

STUDENT INFORMATION

843 Students
96.9% Average daily attendance

STAFF INFORMATION

69.61 Total staff members
13.6 Average number of years teaching experience
10.6 Average number of years teaching in LISD schools

PROFESSIONAL LEARNING

Total number of hours the staff spent developing their job skills last year

5,197

67.5

Average professional learning hours per Lewisville ISD staff member

OBSERVATION

310 Number of administrator visits to observe class instruction

103 Average number of classroom visits per administrator

At Briarhill Middle School, we believe:

- All students can be productive and informed citizens
- Students should be provided with challenging, real-world learning experiences
- Opportunities for risk-taking are a vital part of the learning process

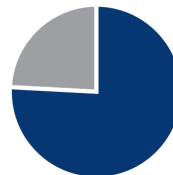
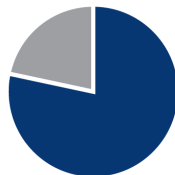
Our mission is to teach students to become informed, engaged citizens, and curious lifelong learners. All students have opportunities to engage in challenging, real-world learning experiences through field trips, hands on experiences and guest speakers from within our community. We are dedicated to providing a safe environment in which our students are inspired to reach their full potential and create a positive legacy for the future.



ACADEMIC PERFORMANCE

PSAT SCORES AND ADVANCED COURSES

Percent of students whose PSAT test scores indicate they are college and career ready. Percent of student population who are enrolled in at least one advanced course.



CLUBS

Clubs allow students to learn beyond the classroom. Some of our clubs include Kindness Club, Fellowship of Christian Athletes, Trebellas, Acafellas, STEAM Club, Bulldog Broadcast, Inventors Club, Circle of Friends, Photography Club, Bulldog Blast, I Found it on Pinterest, Art Club, NJHS, and Student Council.

COMMON SENSE SCHOOL

Earning the Common Sense School badge is a symbol of our school's dedication and commitment to helping students think critically and use technology responsibly to learn, create, and participate.



PROGRAMS

Our campus offers unique programs to help our students grow. Some of these include Lunch and Learns, Samsung Solve for Tomorrow, Mars Habitat For Humanity, 24-Hour World Tour, Lonestar Challenge, Science Night, Career Day, Red Ribbon Week, Archery, and Robotics.



ARTS AND ATHLETICS



100%
Participation in athletics or physical education

84%
Participation in fine arts such as music and art

AWARDS AND RECOGNITIONS

- HEB Teacher of the Year
- TCEA Library Media Specialist of the year
- Samsung Grant Recipient State Winner
- ENERGY STAR certified school
- District and Regional Winner Teacher of the Year
- FM Chamber Students of the Month
- Hosted ISS Downlink with special guests from NASA, local and state dignitaries including the Texas governor



What do our parents think?

In April 2021, parents were surveyed about the campus their child attends. Values represent the percentage of respondents who agree. Based on 206 responses.

Are satisfied overall	93.7%
The school staff cares	96.1%
Students know how to get help	90.3%
I know about my child's grades	88.3%
School is safe	96.1%
Students are happy	92.7%
Staff is encouraging	95.1%
Students who fall behind can get help	89.8%
School work is important	85.0%
Students feel welcomed	86.4%
School communicates effectively	83.5%
The staff is approachable	89.8%
They value culture and individual needs	85.9%

BRIARHILL MIDDLE SCHOOL

Home of the Bulldogs
Flower Mound, Texas

Leslie Davenport, Principal





Downing Middle School STEM Campus Profile

SCHOOL HOURS ONLINE

8:55 a.m. to 4:10 p.m. **GRADES** 6th through 8th grade

lisd.net/downing | facebook.com/downingms | twitter.com/DowningMS

STUDENT INFORMATION

500 Students
97.0% Average daily attendance

STAFF INFORMATION

47.32 Total staff members
14.8 Average number of years teaching experience
10.5 Average number of years teaching in LISD schools

PROFESSIONAL LEARNING

Total number of hours the staff spent developing their job skills last year

3,609

70.8

Average professional learning hours per Lewisville ISD staff member

OBSERVATION

480 Number of administrator visits to observe class instruction

160 Average number of classroom visits per administrator

The Downing commitment

Since opening its doors in 2001, Downing Middle School has been distinguished as an exemplary academic institution that is committed to teaching students the skills necessary to reach their full potential both inside and outside of the classroom. The Downing administration, faculty and staff pride themselves on creating an environment that stimulates creativity, fosters curiosity, and sparks innovation.

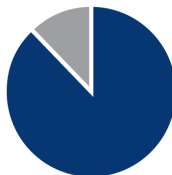
At Downing Middle School, we strive to create confident learners by providing opportunities for every student to thrive. We believe all students can learn and deserve to be challenged every day. Downing Middle School students are strongly encouraged to explore their own interests and are empowered to become leaders in their community. The mission of Downing Middle School is to provide each student with a learning environment that is safe, nurturing, innovative, and engaging. The faculty and staff at Downing Middle School are committed to meeting the unique needs of every student and helping them develop the skills required for success in the 21st century.



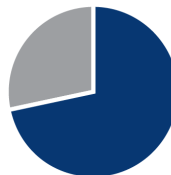
ACADEMIC PERFORMANCE

PSAT SCORES AND ADVANCED COURSES

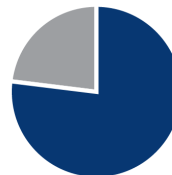
Percent of students whose PSAT test scores indicate they are college and career ready. Percent of student population who are enrolled in at least one advanced course.



PSAT Reading **88%**



PSAT Math **71.8%**



Pre AP/AP enrolled **77%**

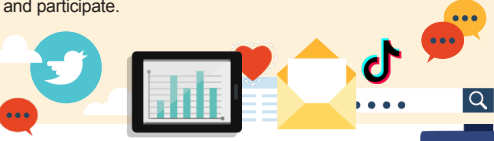
CLUBS

Clubs allow students to learn beyond the classroom. Some of our clubs include Downing United Club, National Junior Honor Society, Downing Archery Club, Circle of Friends, Fellowship of Christian Athletes, Study Buddies, Guy Talk Club, Breakfast Friends Club, and New Horizon's Club.

COMMON SENSE SCHOOL



Earning the Common Sense School badge is a symbol of our school's dedication and commitment to helping students think critically and use technology responsibly to learn, create, and participate.



PROGRAMS

Our campus offers unique programs to help our students grow. Some of these include Giving Bach Program, Downing Kindness Initiative, Downing Stuffs the Pantry, Seeds For Special Needs Initiative, and Nationally Recognized "No Place for Hate" Campus for five years running.



ARTS AND ATHLETICS



99%
Participation in athletics or physical education

89%
Participation in fine arts such as music and art



What do our parents think?

In April 2021, parents were surveyed about the campus their child attends. Values represent the percentage of respondents who agree. Based on 133 responses.

Are satisfied overall	91.0%
The school staff cares	91.0%
Students know how to get help	88.7%
I know about my child's grades	90.2%
School is safe	98.5%
Students are happy	94.7%
Staff is encouraging	96.2%
Students who fall behind can get help	89.5%
School work is important	90.2%
Students feel welcomed	92.5%
School communicates effectively	91.0%
The staff is approachable	89.5%
They value culture and individual needs	90.2%

AWARDS AND RECOGNITIONS

- TEA (Texas Education Agency) STAAR Met Standard Ratings for Academic Excellence
- Texas Business and Education Coalition Honor Roll School
- Superior Ratings at UIL Competitions for band, orchestra and choir
- Division championships in football, volleyball, basketball, soccer and cross country
- Junior Visual Arts Scholastic League medalist
- 1st Place IBM Engineers Week Design Contest

DOWNING MIDDLE SCHOOL

Home of the Diamondbacks
Flower Mound, Texas

Curtis Martin, Principal



Lamar Middle School

Campus Profile

SCHOOL HOURS ONLINE

8:55 a.m. to 4:10 p.m. **GRADES** 6th through 8th grade

lisd.net/lamar | facebook.com/lamarmiddleschool | twitter.com/LamarMS

STUDENT INFORMATION

717 Students
97.0% Average daily attendance

STAFF INFORMATION

62.37 Total staff members
12.8 Average number of years teaching experience
9.7 Average number of years teaching in LISD schools

PROFESSIONAL LEARNING

Total number of hours the staff spent developing their job skills last year

5,438



Average professional learning hours per Lewisville ISD staff member

400

OBSERVATION

Number of administrator visits to observe class instruction

133 Average number of classroom visits per administrator

Our commitment to students:

At Lamar Middle School, our focus is on educating students to become independent learners in a safe and nurturing environment. We challenge students to embrace a growth mindset by providing an appropriate rigor in our course work.

Our extra-curricular programs provide students with opportunities to be successful and learn the values of hard work, sportsmanship and teamwork. Our clubs and organizations provide students many opportunities to find a group they can belong to and find value in.

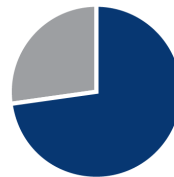
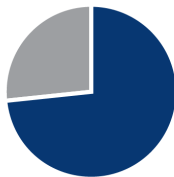
We are committed to providing our students opportunities to engage in real-world learning through field trips, hands-on experiences and through bringing community members into our school to provide rigorous and relevant learning experiences.

At Lamar Middle School, we are preparing leaders, shaping the future and impacting the world.

ACADEMIC PERFORMANCE

PSAT SCORES AND ADVANCED COURSES

Percent of students whose PSAT test scores indicate they are college and career ready. Percent of student population who are enrolled in at least one advanced course.



CLUBS

Clubs provide opportunities for students to learn beyond the classroom. Some of our clubs include National Junior Honor Society, Student Council, Math Club, Chess Club, Circle of Friends, Archery, Book Club, FCA, Kindness Ambassadors, and Table Top Gaming Club.

COMMON SENSE SCHOOL

Earning the Common Sense School badge is a symbol of our school's dedication and commitment to helping students think critically and use technology responsibly to learn, create, and participate.



PROGRAMS

Our campus offers unique programs to help our students become better learners, leaders, and friends.

Some of our programs include AVID, No Place for Hate, and LMS Mentor Program.

ARTS AND ATHLETICS



100%
Participation in athletics
or physical education

86%
Participation in fine arts
such as music and art

AWARDS AND RECOGNITIONS

- UIL One-Act Play Zone Champion
- No Place for Hate Campus
- CREST Award for Counseling Excellence
- Superior Ratings at Fine Arts contests



What do our parents think?

In April 2021, parents were surveyed about the campus their child attends. Values represent the percentage of respondents who agree. Based on 172 responses.

Are satisfied overall	94.2%
The school staff cares	94.2%
Students know how to get help	91.9%
I know about my child's grades	93.0%
School is safe	94.8%
Students are happy	90.1%
Staff is encouraging	93.6%
Students who fall behind can get help	90.1%
School work is important	91.3%
Students feel welcomed	93.6%
School communicates effectively	94.8%
The staff is approachable	93.6%
They value culture and individual needs	89.0%

**LAMAR
MIDDLE SCHOOL**
Home of the Longhorns
Flower Mound, Texas

Kristy Casal, Principal





Bridlewood Elementary School

STEM Campus Profile

SCHOOL HOURS ONLINE

7:45 a.m. to 3:25 p.m. **GRADES** Kindergarten through 5th grade
lisd.net/bridlewood | facebook.com/bridlewoodes | twitter.com/bridlewoodes

STUDENT INFORMATION

552 Students
97.2% Average daily attendance

STAFF INFORMATION

46.37 Total staff members
15.6 Average number of years teaching experience
12 Average number of years teaching in LISD schools

PROFESSIONAL LEARNING

Total number of hours the staff spent developing their job skills last year

3,878



Average professional learning hours per Lewisville ISD staff member



OBSERVATION

Number of administrator visits to observe class instruction

141 Average number of classroom visits per administrator

At Bridlewood Elementary we believe that:

- Every student can be successful
- Innovation is a cornerstone of learning
- Students should be given opportunities to grow as members of their community
- The faculty and staff of Bridlewood Elementary dedicate ourselves to provide an educational foundation that nurtures integrity and fosters a love of learning
- Students have opportunities to engage in real-world experiences that connect to resources outside the school building

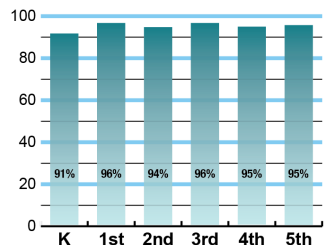
Bridlewood enjoys a high level of community and parental support, which fosters our unique family environment that promotes all of our school working together in order to provide students the best learning environment possible. With a campus commitment to innovation, students are encouraged to develop critical-thinking skills that prepare them for a future they create.



ACADEMIC PERFORMANCE

Istation by grade level

Lewisville ISD monitors students' reading progress through the Istation computer program. Teachers can quickly assess which students need help. This chart shows the percent of students reading on grade level or showing six months growth at the end of the school year.



CLUBS

Students engage in learning of their choice beyond the classroom through clubs. Ours include Student Council, Thunder Music, Bronco Chorale, Honor Choir, Morning Mile, Student News Crew, Cooking Club, Gardening Club, Rubics Cube Club, Robotics Club, Girl's Running Club, and Book Club.

COMMON SENSE SCHOOL



Earning the Common Sense School badge is a symbol of our school's dedication and commitment to helping students think critically and use technology responsibly to learn, create, and participate.



PROGRAMS

Our campus offers unique programs to help our students become better learners, leaders, and friends.

Some of our programs include Bronco Tales, Reflections, WatchDog Dads, Gifted and Talented, Language Science, Adopt an Athlete, and PTA.



ARTS AND ATHLETICS



93%
Participation in athletics or physical education

100%
Participation in fine arts such as music and art

AWARDS AND RECOGNITIONS

- Nationally Certified STEM Campus
- LISD Teacher of the year finalist two years
- Chamber of Commerce School of the month multiple times
- Common Sense Media Certified School



What do our parents think?

In April 2021, parents were surveyed about the campus their child attends. Values represent the percentage of respondents who agree. Based on 142 responses.

Are satisfied overall	95.1%
The school staff cares	95.8%
Students know how to get help	94.4%
I know about my child's grades	90.8%
School is safe	97.9%
Students are happy	92.3%
Staff is encouraging	95.1%
Students who fall behind can get help	88.0%
School work is important	90.1%
Students feel welcomed	90.1%
School communicates effectively	94.4%
The staff is approachable	94.4%
They value culture and individual needs	92.3%

BRIDLEWOOD ELEMENTARY SCHOOL

Home of the Broncos
Flower Mound, Texas

Robin Block, Principal



Flower Mound Elementary School Campus Profile

SCHOOL HOURS ONLINE

7:45 a.m. to 3 p.m. **GRADES** Kindergarten through 5th grade

lisd.net/flowermound | facebook.com/flowermoundes | twitter.com/FlowerMoundES

STUDENT INFORMATION

454 Students
96.8% Average daily attendance

STAFF INFORMATION

55.91 Total staff members
13.9 Average number of years teaching experience
11 Average number of years teaching in LISD schools



At Flower Mound Elementary we believe:

Partnerships with our students, family, and community strengthen individual achievements and successes for each student; children are our purpose and our passion. All students receive an extended curriculum to observe our world, question ideas, and apply knowledge in an atmosphere of excellence through a STEAM emphasis. Engagement involving the use of technology, differentiation, genius hour, math challenge and after school clubs to help meet the individual academic and social needs of all students.

We strive to develop successful students through innovative and diverse learning experiences and promote strong character and citizenship through our School of Character curriculum. At Flower Mound Elementary, we believe in making a difference!

PROFESSIONAL LEARNING

Total number of hours the staff spent developing their job skills last year

4,484



Average professional learning hours per Lewisville ISD staff member

177

OBSERVATION

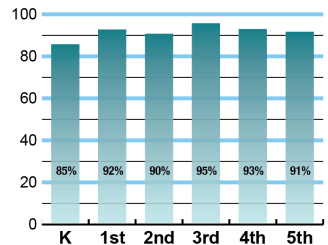
Number of administrator visits to observe class instruction

59 Average number of classroom visits per administrator

ACADEMIC PERFORMANCE

Istation by grade level

Lewisville ISD monitors students' reading progress through the Istation computer program. Teachers can quickly assess which students need help. This chart shows the percent of students reading on grade level or showing six months growth at the end of the school year.



CLUBS

Students engage in learning of their choice beyond the classroom through clubs. Ours include Student Council, Art Club, Falcon Singers Choir, Chess Club, Falcon Nation, Destination Imagination, Percussion, Green Team, Maker Monday, Running Club, Coder Club and iPiano.

COMMON SENSE SCHOOL



Earning the Common Sense School badge is a symbol of our school's dedication and commitment to helping students think critically and use technology responsibly to learn, create, and participate.



PROGRAMS

Our campus offers unique programs to help our students grow. Some of ours include STEM Team - 4th and 5th Grade girls STEM Leadership, Rachel's Challenge, Circle of Friends, School of Character, Ready Bodies/Learning Minds, LLI Reading Intervention, and Fuel Up to Play 60.



ARTS AND ATHLETICS



99%
Participation in athletics or physical education

99%
Participation in fine arts such as music and art

AWARDS AND RECOGNITIONS

- 2019 National PTA School of Excellence
- 2018 Texas School of Character
- Second place at Sandy Lake Music Festival
- 2018 National School of Character
- LEF Grants provided white board tables for classrooms and library books for the Boys Reading Club
- ENERGY STAR certified school
- 2015 Texas Counselor of the Year



What do our parents think?

In April 2021, parents were surveyed about the campus their child attends. Values represent the percentage of respondents who agree. Based on 112 responses.

Are satisfied overall	95.5%
The school staff cares	97.3%
Students know how to get help	96.4%
I know about my child's grades	96.4%
School is safe	99.1%
Students are happy	94.6%
Staff is encouraging	96.4%
Students who fall behind can get help	94.6%
School work is important	91.1%
Students feel welcomed	93.8%
School communicates effectively	95.5%
The staff is approachable	95.5%
They value culture and individual needs	95.5%

FLOWER MOUND ELEMENTARY SCHOOL

Home of the Falcons
Flower Mound, Texas

Christine Van Scoyoc, Principal



Heritage Elementary School

Campus Profile

SCHOOL HOURS ONLINE

7:45 a.m. to 3 p.m. **GRADES** Kindergarten through 5th grade
lisd.net/heritage | facebook.com/heritageelementary | twitter.com/HeritageES

STUDENT INFORMATION

490 Students
96.9% Average daily attendance

STAFF INFORMATION

47.5 Total staff members
14.7 Average number of years teaching experience
11.3 Average number of years teaching in LISD schools

PROFESSIONAL LEARNING

Total number of hours the staff spent developing their job skills last year

4,018

71.8

Average professional learning hours per Lewisville ISD staff member

100

OBSERVATION

Number of administrator visits to observe class instruction

50 Average number of classroom visits per administrator

At Heritage Elementary, we believe:

- All students can learn and grow
- Family and community partnerships are vital to the success of each student
- Each child is an individual and should be celebrated
- Educating the whole child is important at Heritage

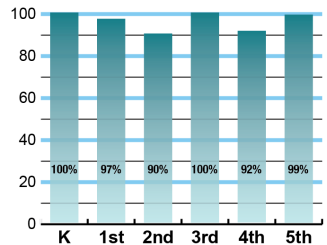
We strive to create a family-friendly environment with high expectations, high rigor and fun! Hands on learning experiences, with our talented staff, makes for a very engaged student body. Serving others is important to our campus climate and culture.

Our award-winning PTA, Texas Our Heritage Outdoor Learning Area, and fine arts programs make Heritage unique. Students are encouraged to think, problem solve and collaborate with real-world issues.

ACADEMIC PERFORMANCE

Istation by grade level

Lewisville ISD monitors students' reading progress through the Istation computer program. Teachers can quickly assess which students need help. This chart shows the percent of students reading on grade level or showing six months growth at the end of the school year.



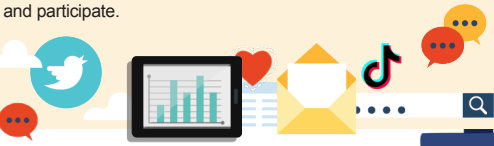
CLUBS

Students engage in learning of their choice beyond the classroom through clubs. Ours include Running Club, Recycling Club, Young Rembrandts, Little Bit of Broadway, Junior Librarians, Student Council, Boys and Girls Choir, Dribbling Hawks and Safety Patrol.

COMMON SENSE SCHOOL



Earning the Common Sense School badge is a symbol of our school's dedication and commitment to helping students think critically and use technology responsibly to learn, create, and participate.



PROGRAMS

Our campus offers unique programs to help our students grow. Some of ours include Veterans Day, Texas Our Heritage Outdoor Learning, Science Discovery/STEM, Watch D.O.G.S. (Dads Of Great Students), 5 Pillars of Character, Ready Set Teach (with Marcus HS), Adopt an Athlete and Mystery Readers.



ARTS AND ATHLETICS



100%
Participation in athletics or physical education

100%
Participation in fine arts such as music and art

AWARDS AND RECOGNITIONS

- Texas Master Naturalists state recognition for outdoor learning project/Augmented Reality
- HV/FM Chamber of Commerce School of the Month
- Award winning Boys and Girls Choir
- Local, state and national recognition for Fine Arts and Writing
- ELA/Reading Distinction by TEA
- National award winner Reflections Contest
- Digital Citizenship School of Excellence
- National PTA School of Excellence



What do our parents think?

In April 2021, parents were surveyed about the campus their child attends. Values represent the percentage of respondents who agree. Based on 113 responses.

Are satisfied overall	95.6%
The school staff cares	93.8%
Students know how to get help	92.0%
I know about my child's grades	89.4%
School is safe	97.3%
Students are happy	97.3%
Staff is encouraging	97.3%
Students who fall behind can get help	95.6%
School work is important	97.3%
Students feel welcomed	87.6%
School communicates effectively	91.2%
The staff is approachable	92.0%
They value culture and individual needs	92.9%

HERITAGE ELEMENTARY SCHOOL

Home of the Hawks
Highland Village, Texas

Toby Maxson, Principal



Highland Village Elementary School

Campus Profile

SCHOOL HOURS ONLINE

7:45 a.m. to 3 p.m. **GRADES** Kindergarten through 5th grade

lisd.net/highlandvillage | facebook.com/highlandvillagees | twitter.com/hv_vikings

STUDENT INFORMATION

363 Students
97.6% Average daily attendance

STAFF INFORMATION

44.51 Total staff members
15.1 Average number of years teaching experience
12 Average number of years teaching in LISD schools

PROFESSIONAL LEARNING

Total number of hours the staff spent developing their job skills last year

3,722

79.2

Average professional learning hours per Lewisville ISD staff member

338

OBSERVATION

Number of administrator visits to observe class instruction

169 Average number of classroom visits per administrator

What we believe

At Highland Village Elementary, our mission is to work in partnership with our parents and community to engage, challenge, and empower students through collaborative and innovative experiences.

At Highland Village Elementary, we believe that:

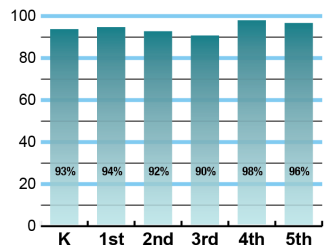
- All students can be successful both academically and socially
- Mistakes are an opportunity to make learning more meaningful
- Grit and perseverance are essential components for growth
- Each person who enters our doors feels safe and valued

We are committed to designing authentic, real-world learning experiences that are based on curriculum standards. Embedded throughout these experiences are 21st Century learning skills and goal setting that will challenge and encourage each student to become critical/creative thinkers and lifelong learners. Our motto is "Life is Good at HVE." We focus on the development of the whole child with a foundational understanding of social and emotional skills and strategies. We make everyone feel welcomed and successful.

ACADEMIC PERFORMANCE

Istation by grade level

Lewisville ISD monitors students' reading progress through the Istation computer program. Teachers can quickly assess which students need help. This chart shows the percent of students reading on grade level or showing six months growth at the end of the school year.



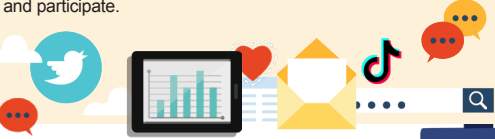
CLUBS

Clubs provide opportunities for students to engage in learning of their choice beyond the classroom.

Some of our clubs include Lego Club, Campus Ambassadors, Young Rembrandts, Coder Club, SSA Sports, and Sarah's Spanish School.

COMMON SENSE SCHOOL

Earning the Common Sense School badge is a symbol of our school's dedication and commitment to helping students think critically and use technology responsibly to learn, create, and participate.



PROGRAMS

Our campus offers unique programs to help our students become better learners, leaders, and friends. Some of ours include schoolwide 2nd Step Social/Emotional Curriculum, Choir (4th and 5th grades), Safety Patrol (3rd through 5th grades), and KVKG Announcements.



ARTS AND ATHLETICS



100%
Participation in athletics or physical education

99%
Participation in fine arts such as music and art

AWARDS AND RECOGNITIONS

- National PTA School of Excellence 2020-2022
- ENERGY STAR certified school
- 21-Day Challenge for Healthier Living \$500 Award
- PTA School of Excellence
- Common Sense School
- General Education - CREST Award Winner



What do our parents think?

In April 2021, parents were surveyed about the campus their child attends. Values represent the percentage of respondents who agree. Based on 88 responses.

Are satisfied overall	97.7%
The school staff cares	98.9%
Students know how to get help	97.7%
I know about my child's grades	94.3%
School is safe	98.9%
Students are happy	96.6%
Staff is encouraging	98.9%
Students who fall behind can get help	100.0%
School work is important	95.5%
Students feel welcomed	97.7%
School communicates effectively	97.7%
The staff is approachable	98.9%
They value culture and individual needs	96.6%

HIGHLAND VILLAGE ELEMENTARY SCHOOL

Home of the Vikings
Highland Village, Texas

Leslye Mitchell, Principal



McAuliffe Elementary School

Campus Profile

SCHOOL HOURS ONLINE

7:45 a.m. to 3 p.m. GRADES Pre-K through 5th grade

lisd.net/mcauliffe | facebook.com/mcauliffeelementary | twitter.com/McAHighlander

STUDENT INFORMATION

532	Students
96.7%	Average daily attendance

STAFF INFORMATION

51.22	Total staff members
12.9	Average number of years teaching experience
9.7	Average number of years teaching in LISD schools

PROFESSIONAL LEARNING

Total number of hours the staff spent developing their job skills last year

4,595



Average professional learning hours per Lewisville ISD staff member

314

OBSERVATION

Number of administrator visits to observe class instruction

157 Average number of classroom visits per administrator

At McAuliffe Elementary, we believe:

- A safe and inclusive learning environment is paramount to student success
- Partnerships with families and community members foster authentic learning through real-world application
- Learning can, and should, be exciting
- 21st-century skills encourage students to be the problem-solving leaders of tomorrow

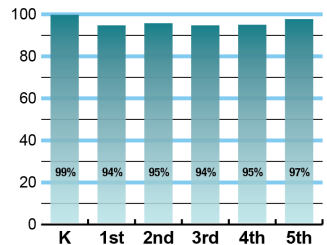
The McAuliffe staff strives to meet academic, emotional, social, and physical growth of all students. We strive to educate the whole child by employing high academic standards through design thinking and the integration of 21st-century skills, along with regular character education lessons and Genius Hour every Friday. Genius Hour provides learners the opportunity to pursue passions and personal interests, become problem solvers, and see their place in the community and world.

By establishing partnerships with family and community members through school events, speakers, volunteers, and activities, McAuliffe learners gain authentic-learning experiences spanning each aspect of their lives. The McAuliffe staff anticipates that our family made up of teachers, children, parents, grandparents, guardians, volunteers, and community grow together in a safe, inclusive environment every day.

ACADEMIC PERFORMANCE

Istation by grade level

Lewisville ISD monitors students' reading progress through the Istation computer program. Teachers can quickly assess which students need help. This chart shows the percent of students reading on grade level or showing six months growth at the end of the school year.



CLUBS

Students engage in learning of their choice beyond the classroom through clubs. Ours include M&M (Choir), Safety Patrol, American Girl Doll, Sewing, Knitting, Basketball, Kickball, Big Sis/Little Sis, Pokeman, Crafting, Drawing, Crafting Art, Kindness, Dances from Around the World, Legos, Student Council, Circle of Friends, Hair Styling, Gardening, Recycling and Slime.

COMMON SENSE SCHOOL

Earning the Common Sense School badge is a symbol of our school's dedication and commitment to helping students think critically and use technology responsibly to learn, create, and participate.



PROGRAMS

Our campus offers unique programs to help our students become better learners, leaders, and friends. Some of ours include Genius Hour, GE, Little Bit of Broadway, Watch Me Sculpt, SSA Sports, Robotics, Filmmaking, Tennis and Destination Imagination.



ARTS AND ATHLETICS



99%
Participation in athletics or physical education

99%
Participation in fine arts such as music and art

AWARDS AND RECOGNITIONS

- American Heart Association Heart Hero Awards for 6 staff members
- Received CPR Hands-Only kits for campus and district use from Reliant Energy and The American Heart Association
- 21-Day Challenge Award
- CREST Counselor's Award
- Fuel Up to Play 60 Award



What do our parents think?

In April 2021, parents were surveyed about the campus their child attends. Values represent the percentage of respondents who agree. Based on 155 responses.

Are satisfied overall	95.5%
The school staff cares	98.1%
Students know how to get help	97.4%
I know about my child's grades	95.5%
School is safe	98.1%
Students are happy	98.1%
Staff is encouraging	98.1%
Students who fall behind can get help	91.6%
School work is important	94.8%
Students feel welcomed	92.3%
School communicates effectively	93.5%
The staff is approachable	96.8%
They value culture and individual needs	92.9%

McAULIFFE ELEMENTARY SCHOOL

Home of the Highlanders
Highland Village, Texas

Jennifer Mattingly, Principal



Prairie Trail Elementary School

Campus Profile

SCHOOL HOURS ONLINE

7:45 a.m. to 3 p.m. **GRADES** Kindergarten through 5th grade
lisd.net/prairietrail | facebook.com/prairietrailes | twitter.com/PrairieTrailES

STUDENT INFORMATION

633 Students
97.3% Average daily attendance

STAFF INFORMATION

66.73 Total staff members
12.5 Average number of years teaching experience
9.6 Average number of years teaching in LISD schools

PROFESSIONAL LEARNING

Total number of hours the staff spent developing their job skills last year

4,535



Average professional learning hours per Lewisville ISD staff member

127

OBSERVATION

Number of administrator visits to observe class instruction

64 Average number of classroom visits per administrator

At Prairie Trail Elementary School, we will:

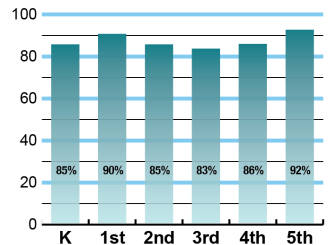
- Find the value in every child
- Allow for creative, joyful noise
- Be collaborative and willing to share ideas with all stakeholders
- Be innovative and have a growth mindset

We feel that elementary school is a time for exploration. Take a moment to imagine the elementary world: letters, numbers, stories, sharing, experimenting, games, collaborating, reading, problem solving, thinking, puzzles, role-play, reflecting, and the list goes on. Imagination and creativity are everywhere. Learning is accomplished by doing, touching, and experiencing. Each age group is different and unique, yet every child is always growing socially, emotionally, physically, and intellectually. When home, school, and community work together as a team, we can develop the “whole” child. Only through this teamwork will, “All of our students enjoy thriving, productive lives in a future *they* create.”

ACADEMIC PERFORMANCE

Istation by grade level

Lewisville ISD monitors students' reading progress through the Istation computer program. Teachers can quickly assess which students need help. This chart shows the percent of students reading on grade level or showing six months growth at the end of the school year.



CLUBS

Clubs provide opportunities for students to engage in learning of their choice beyond the classroom.

Some of our clubs include STEM, Chorale and Pulse (Choir and Mallets), Safety Patrol, Circle of Friends, Green Team, Book Clubs, Helping Hands and Hallway Greeters.

COMMON SENSE SCHOOL



Earning the Common Sense School badge is a symbol of our school's dedication and commitment to helping students think critically and use technology responsibly to learn, create, and participate.



What do our parents think?

PROGRAMS

Our campus offers unique programs to help our students grow. Ours include Spanish/English Dual Language (K-5), No Place for Hate, Good Morning Prairie Trail, What I Need Enrichment/Intervention During the Day (WIN), Gifted and Talented, Watch D.O.G.S., Author Visit, Thinkapalooza, 21-Day Health Challenge, and Veteran's Day Celebration.

ARTS AND ATHLETICS



100%
Participation in athletics or physical education

100%
Participation in fine arts such as music and art

In April 2021, parents were surveyed about the campus their child attends. Values represent the percentage of respondents who agree. Based on 178 responses.

Are satisfied overall	93.8%
The school staff cares	94.9%
Students know how to get help	92.1%
I know about my child's grades	88.2%
School is safe	96.1%
Students are happy	95.5%
Staff is encouraging	94.9%
Students who fall behind can get help	92.1%
School work is important	92.7%
Students feel welcomed	87.1%
School communicates effectively	91.0%
The staff is approachable	92.1%
They value culture and individual needs	93.3%

AWARDS AND RECOGNITIONS

- Chamber of Commerce School and Teacher of the Month
- Spotlight Campus in the "No Place for Hate" Regional Guide
- Top Participant in district 21-Day Challenge, 3 years
- PTA Golden Apple Award for 100 percent staff membership
- PTA "Men Are Really Super" (MARS) Award
- ENERGY STAR certified school

PRAIRIE TRAIL ELEMENTARY SCHOOL

Home of the Texans
Flower Mound, Texas

Wendi Vaughn, Principal



Timber Creek Elementary School

Campus Profile

SCHOOL HOURS ONLINE

7:45 a.m. to 3 p.m. **GRADES** Pre-K through 5th grade

lisd.net/timbercreek | facebook.com/timbercreekes | twitter.com/TimbercreekES

STUDENT INFORMATION

450 Students
97.3% Average daily attendance

STAFF INFORMATION

51.88 Total staff members
12.8 Average number of years teaching experience
9.4 Average number of years teaching in LISD schools

PROFESSIONAL LEARNING

Total number of hours the staff spent developing their job skills last year

4,505



Average professional learning hours per Lewisville ISD staff member

383

OBSERVATION

Number of administrator visits to observe class instruction

192 Average number of classroom visits per administrator

At Timber Creek Elementary, we believe:

- Every child can be a leader
- A growth mindset is necessary to embrace learning as a lifestyle
- No child is too young to take their first action steps in visualizing and creating their future

As a Leader in Me School, we promote student leadership and celebrate the rich diversity of our community. We are committed to excellence in providing a safe, risk-free, engaging learning environment that teaches the whole child.

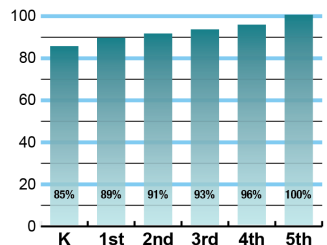
We recognize the importance of nurturing students' academic growth as well as supporting their social emotional health. We are devoted to helping every student discover and develop their individual strengths and talents. We encourage goal setting at an early age and celebrate progress along the way throughout each child's educational journey.

We cultivate a balance of tradition and innovation that ensures our learners are actively engaged in meaningful and relevant work that prepares them for success in the 21st century. At Timber Creek Elementary, we prepare ALL students to enjoy thriving, productive lives in a future *they* create.

ACADEMIC PERFORMANCE

Istation by grade level

Lewisville ISD monitors students' reading progress through the Istation computer program. Teachers can quickly assess which students need help. This chart shows the percent of students reading on grade level or showing six months growth at the end of the school year.



CLUBS

Students engage in learning of their choice beyond the classroom through clubs. Ours include Student Lighthouse Team, Student Council, Morning Mile, Safety Patrol, Tiger Choir, Watch Me Sculpt, Young Rembrandts, Drama Kids, Chess, Wise Computing, Basketball, Soccer, Dodgeball, Film Making and iPiano.

COMMON SENSE SCHOOL



Earning the Common Sense School badge is a symbol of our school's dedication and commitment to helping students think critically and use technology responsibly to learn, create, and participate.



What do our parents think?

PROGRAMS

Our campus offers unique programs to help our students grow. Ours include The Leader in Me, Aligning Academics, Empowering Instruction, Student Leadership Roles, Student Recognition Program, Watch D.O.G.S., Tiger News Network, College & Career Readiness Week, Adopt-An-Athlete, Family Fitness Night and Vision Night.

In April 2021, parents were surveyed about the campus their child attends. Values represent the percentage of respondents who agree. Based on 105 responses.

Are satisfied overall	99.0%
The school staff cares	99.0%
Students know how to get help	99.0%
I know about my child's grades	98.1%
School is safe	100.0%
Students are happy	97.1%
Staff is encouraging	100.0%
Students who fall behind can get help	98.1%
School work is important	95.2%
Students feel welcomed	98.1%
School communicates effectively	98.1%
The staff is approachable	99.0%
They value culture and individual needs	97.1%

ARTS AND ATHLETICS



100%
Participation in athletics
or physical education

100%
Participation in fine arts
such as music and art

AWARDS AND RECOGNITIONS

- National PTA School of Excellence 2020-2022
- Leader in Me School
- ENERGY STAR certified school
- PTA Golden Apple Award
- PTA Head Start Award
- Healthy Zone School alumni
- Destination Imagination Team 3rd place at regional competition
- Former TCE students receive TAFE National Award for video on 7 Habits
- Fuel Up to Play 60 Recognition (FUTP60)

TIMBER CREEK ELEMENTARY SCHOOL

Home of the Tigers
Flower Mound, Texas

Amy Middleton, Principal



Visit us online for more information about the best schools in Texas.



lisd.net/realtor

